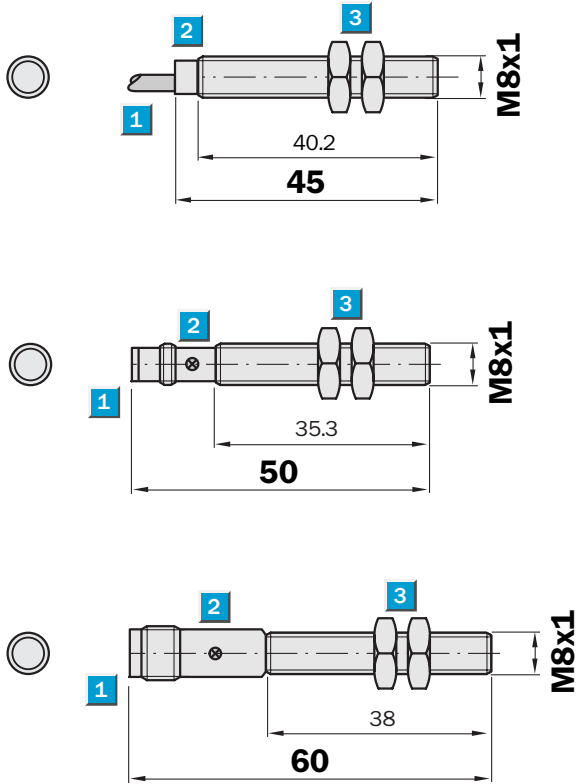


Sensing range
1.5 mm

Inductive sensor

- High switching frequency
- Short-circuit protection (pulsed)
- Robust brass housing, nickel-plated with fine thread M8 x 1 mm
- Enclosure rating IP 67

Dimensional drawing

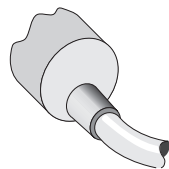


- 1 Connection
- 2 Display LED
- 3 Fastening nuts (2 x); width across 13, metal

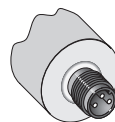
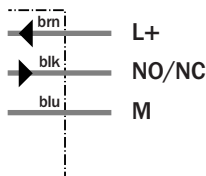


Connection type

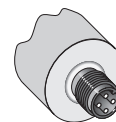
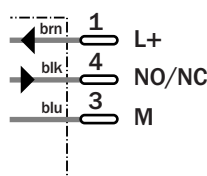
IM08-1B5NO-ZW1	IM08-1B5NS-ZT1	IM08-1B5NS-ZC1
IM08-1B5NS-ZW1	IM08-1B5PO-ZT1	IM08-1B5PS-ZC1
IM08-1B5PO-ZW1	IM08-1B5PS-ZT1	
IM08-1B5PS-ZW1		



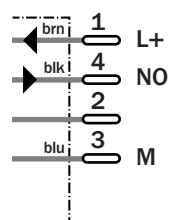
3 x 0.14 mm²



M8, 3-pin



M12, 4-pin



See chapter Accessories

Connector, M12, 4-pin

Connector, M8, 3-pin

Technical data		IM08-	1B5NO-ZW1	1B5NS-ZW1	1B5PO-ZW1	1B5PS-ZW1	1B5NS-ZC1	1B5NS-ZT1	1B5PO-ZT1	1B5PS-ZC1	1B5PS-ZT1
Sensing range S_n	1.5 mm										
Electrical configuration	DC 3-wire										
Supply voltage V_s	DC 10 ... 30 V										
Residual ripple V_{pp}	$\leq 10 \%$										
Voltage drop V_d	$\leq 1.2 V^{1)}$										
Power consumption	$\leq 20 mA^{2)}$										
Continuous current I_a	$\leq 200 mA$										
Time delay before availability t_v	$\leq 100 ms$										
Hysteresis H, of s_r	2 ... 10 %										
Repeatability R	$\leq 2 \%$ (U_b and T_a constant) ³⁾										
Temperature drift, of s_r	$\pm 10 \%$										
EMC	According to EN 60947-5-2										
Switching output	PNP										
	NPN										
Output function	Normally open										
	Normally closed										
Installation	Flush										
Connection type	Connector, M8, 3-pin										
	Connector, M12, 4-pin										
	Cable, PVC, 2 m										
Enclosure rating	IP 67 ⁴⁾										
Max. switching frequency	3,000 Hz										
Dimensions	M8 x 1 ⁵⁾										
Short circuit protection	✓ ⁶⁾										
Reverse polarity protection	✓										
Power-up pulse suppression	✓										
Shock/vibration stress	30 g, 11 ms/10 ... 55 Hz, 1 mm										
Ambient operating temperature T_a	-25 °C ... +70 °C										
Housing material	Brass nickel-plated, plastic										
Tightening torque	4 Nm										

¹⁾ at I_a max
²⁾ without load

³⁾ of s_r
⁴⁾ according to EN 60529

⁵⁾ thread diameter x pitch (mm)
⁶⁾ (pulsed)

Order information

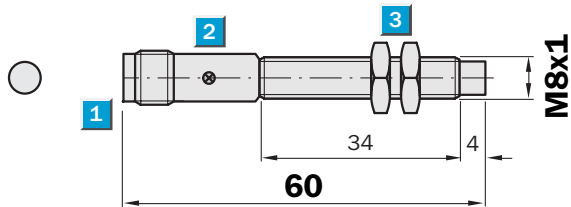
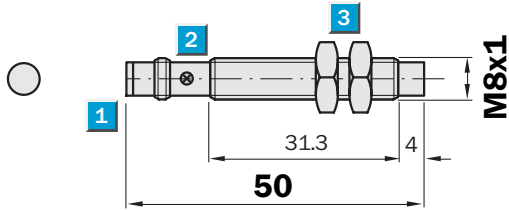
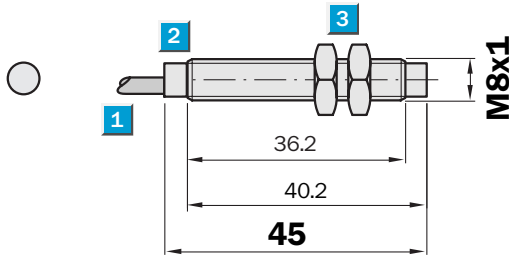
Type	Order no.
IM08-1B5NO-ZW1	6 020 218
IM08-1B5NS-ZW1	6 020 216
IM08-1B5PO-ZW1	6 020 217
IM08-1B5PS-ZW1	6 020 215
IM08-1B5NS-ZC1	6 020 224
IM08-1B5NS-ZT1	6 020 220
IM08-1B5PO-ZT1	6 020 221
IM08-1B5PS-ZC1	6 020 223
IM08-1B5PS-ZT1	6 020 219

Sensing range
2.5 mm

Inductive sensor

- High switching frequency
- Short-circuit protection (pulsed)
- Robust brass housing, nickel-plated with fine thread M8 x 1 mm
- Enclosure rating IP 67

Dimensional drawing

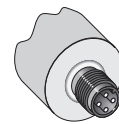
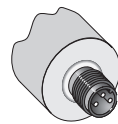
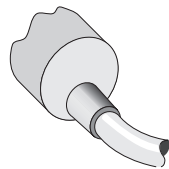


- 1 Connection
- 2 Display LED
- 3 Fastening nuts (2 x); width across 13, metal



Connection type

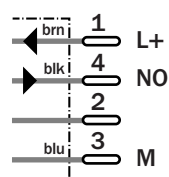
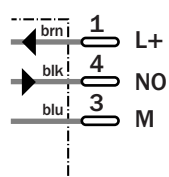
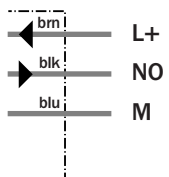
IM08-2N5NS-ZW1	IM08-2N5NS-ZT1	IM08-2N5NS-ZC1
IM08-2N5PS-ZW1	IM08-2N5PS-ZT1	IM08-2N5PS-ZC1



3 x 0.14 mm²

M8, 3-pin

M12, 4-pin



See chapter Accessories

Connector, M12, 4-pin

Connector, M8, 3-pin

Technical data		IM08-	2N5NS-ZW1	2N5PS-ZW1	2N5NS-ZC1	2N5NS-ZT1	2N5PS-ZC1	2N5PS-ZT1				
Sensing range S_n	2.5 mm											
Electrical configuration	DC 3-wire											
Supply voltage V_s	DC 10 ... 30 V											
Residual ripple V_{pp}	$\leq 10 \%$											
Voltage drop V_d	$\leq 1.2 V^{1)}$											
Power consumption	$\leq 20 mA^{2)}$											
Continuous current I_a	$\leq 200 mA$											
Time delay before availability t_v	$\leq 100 ms$											
Hysteresis H, of s_r	2 ... 10 %											
Repeatability R	$\leq 2 \%$ (U_b and T_a constant) ³⁾											
Temperature drift, of s_r	$\pm 10 \%$											
EMC	According to EN 60947-5-2											
Switching output	PNP											
	NPN											
Output function	Normally open											
Installation	Non-flush											
Connection type	Connector, M8, 3-pin											
	Connector, M12, 4-pin											
	Cable, PVC, 2 m											
Enclosure rating	IP 67 ⁴⁾											
Max. switching frequency	2,500 Hz											
Dimensions	M8 x 1 ⁵⁾											
Short circuit protection	✓ ⁶⁾											
Reverse polarity protection	✓											
Power-up pulse suppression	✓											
Shock/vibration stress	30 g, 11 ms/10 ... 55 Hz, 1 mm											
Ambient operating temperature T_a	-25 °C ... +70 °C											
Housing material	Brass nickel-plated, plastic											
Tightening torque	4 Nm											

¹⁾ at I_a max
²⁾ without load

³⁾ of s_r
⁴⁾ according to EN 60529

⁵⁾ thread diameter x pitch (mm)
⁶⁾ (pulsed)

Order information

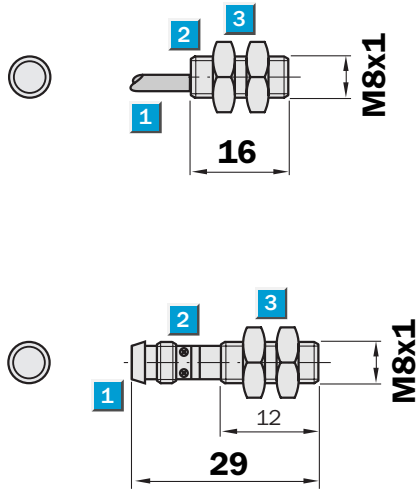
Type	Order no.
IM08-2N5NS-ZW1	6 020 228
IM08-2N5PS-ZW1	6 020 227
IM08-2N5NS-ZC1	6 020 236
IM08-2N5NS-ZT1	6 020 232
IM08-2N5PS-ZC1	6 020 235
IM08-2N5PS-ZT1	6 020 231

Sensing range
1.5 mm

Inductive sensor

- High switching frequency
- Short-circuit protection (pulsed)
- Robust brass housing, nickel-plated with fine thread M8 x 1 mm
- Enclosure rating IP 67

Dimensional drawing



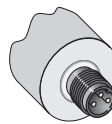
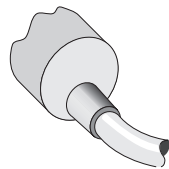
- 1 Connection
- 2 Display LED
- 3 Fastening nuts (2 x); width across 13, metal



Connection type

IM08-1B5NS-ZWK
IM08-1B5PS-ZWK

IM08-1B5NS-ZTK
IM08-1B5PS-ZTK

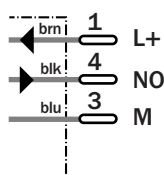
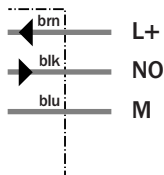


See chapter Accessories

Connector, M8, 3-pin

3 x 0.14 mm²

M8, 3-pin



Technical data		IM08-	1B5NS-ZWK	1B5PS-ZWK	1B5NS-ZTK	1B5PS-ZTK						
Sensing range S_n	1.5 mm											
Electrical configuration	DC 3-wire											
Supply voltage V_s	DC 10 ... 30 V											
Residual ripple V_{pp}	$\leq 20\%$ ¹⁾											
Voltage drop V_d	$\leq 2\text{ V}$ ²⁾											
Power consumption	10 mA ³⁾											
Continuous current I_a	$\leq 200\text{ mA}$											
Time delay before availability t_v	$\leq 10\text{ ms}$											
Hysteresis H, of s_r	10 %											
Repeatability R	$\leq 5\%$ (U_b and T_a constant)											
Temperature drift, of s_r	$\pm 10\%$											
EMC	According to EN 60947-5-2											
Switching output	PNP											
	NPN											
Output function	Normally open ⁴⁾											
Installation	Flush											
Connection type	Connector, M8, 3-pin											
	Cable, PVC, 2 m											
Enclosure rating	IP 67 ⁵⁾											
Max. switching frequency	5,000 Hz											
Dimensions	M8 x 1 ⁶⁾											
Short circuit protection	\checkmark ⁷⁾											
Reverse polarity protection	\checkmark											
Power-up pulse suppression	\checkmark											
Shock/vibration stress	30 g, 11 ms/10 ... 55 Hz, 1 mm											
Ambient operating temperature T_a	-25 °C ... +70 °C											
Housing material	Brass nickel-plated, plastic											
Tightening torque	4 Nm											

¹⁾ of U_b
²⁾ at $I_a = 200\text{ mA}$

³⁾ without load

⁴⁾ normally closed function available on re-

quest
⁵⁾ according to EN 60529

⁶⁾ thread diameter x pitch (mm)
⁷⁾ (pulsed)

Order information

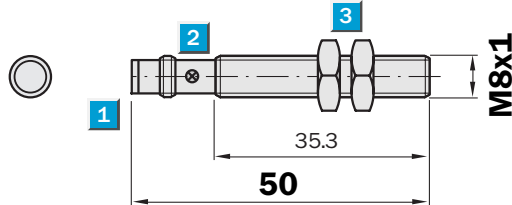
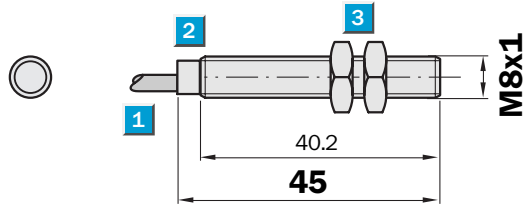
Type	Order no.
IM08-1B5NS-ZWK	6 020 173
IM08-1B5PS-ZWK	6 020 111
IM08-1B5NS-ZTK	6 020 176
IM08-1B5PS-ZTK	6 020 112

Sensing range
2 mm

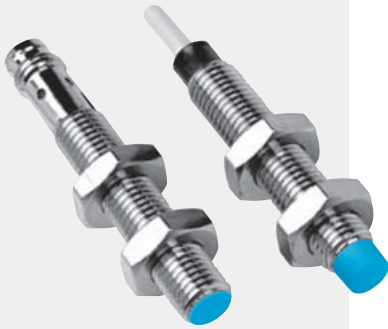
Inductive sensor

- Enhanced sensing range
- High switching frequency
- Short-circuit protection (pulsed)
- Robust brass housing, nickel-plated with fine thread M8 x 1 mm
- Enclosure rating IP 67

Dimensional drawing



- 1 Connection
- 2 Display LED
- 3 Fastening nuts (2 x); width across 13, metal



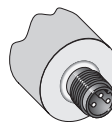
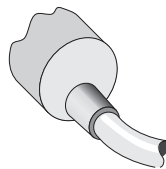
See chapter Accessories

Connector, M8, 3-pin

Connection type

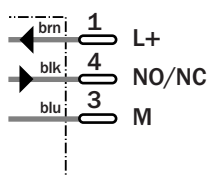
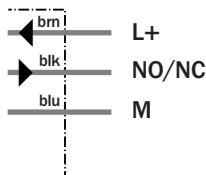
IM08-02BNS-ZW1
IM08-02BPO-ZW1
IM08-02BPS-ZW1

IM08-02BNO-ZT1
IM08-02BNS-ZT1
IM08-02BPS-ZT1
IM08-02BPO-ZT1



3 x 0.14 mm²

M8, 3-pin



Technical data		IM08-	02BNS -ZW1	02BPO -ZW1	02BPS -ZW1	02BNO -ZT1	02BNS -ZT1	02BPS -ZT1	02BPO -ZT1			
Sensing range S_n	2 mm											
Electrical configuration	DC 3-wire											
Supply voltage V_s	DC 10 ... 30 V											
Residual ripple V_{pp}	$\leq 10\%$ ¹⁾											
Voltage drop V_d	$\leq 1.2\text{ V}$ ²⁾											
Power consumption	$\leq 20\text{ mA}$ ³⁾											
Continuous current I_a	$\leq 200\text{ mA}$											
Time delay before availability t_v	$\leq 100\text{ ms}$											
Hysteresis H, of s_r	2 ... 15 %											
Repeatability R	$\leq 5\%$ (U_b and T_a constant) ⁴⁾											
Temperature drift, of s_r	$\pm 10\%$											
EMC	According to EN 60947-5-2											
Switching output	PNP											
	NPN											
Output function	Normally closed											
	Normally open											
Installation	Flush											
Connection type	Connector, M8, 3-pin											
	Cable, PVC, 2 m											
Enclosure rating	IP 67 ⁵⁾											
Max. switching frequency	3,000 Hz											
Dimensions	M8 x 1 ⁶⁾											
Short circuit protection	✓ ⁷⁾											
Reverse polarity protection	✓											
Power-up pulse suppression	✓											
Shock/vibration stress	30 g, 11 ms/10 ... 55 Hz, 1 mm											
Ambient operating temperature T_a	-25 °C ... +70 °C											
Housing material	Brass nickel-plated, plastic											
Tightening torque	4 Nm											

¹⁾ of U_b
²⁾ at I_a max
³⁾ without load
⁴⁾ of s_r
⁵⁾ according to EN 60529
⁶⁾ thread diameter x pitch (mm)
⁷⁾ (pulsed)

Order information

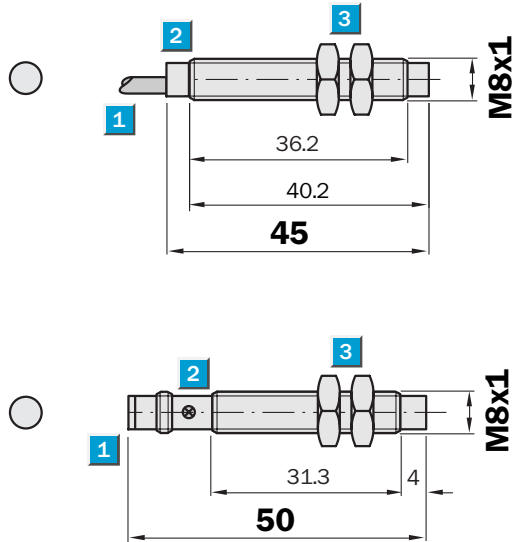
Type	Order no.
IM08-02BNS-ZW1	7 900 002
IM08-02BPO-ZW1	7 900 003
IM08-02BPS-ZW1	7 900 001
IM08-02BNO-ZT1	7 900 008
IM08-02BNS-ZT1	7 900 006
IM08-02BPS-ZT1	7 900 005
IM08-02BPO-ZT1	7 900 007

Sensing range
4 mm

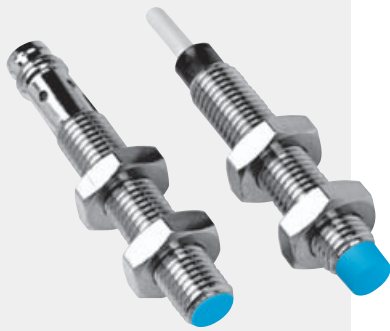
Inductive sensor

- Enhanced sensing range
- High switching frequency
- Short-circuit protection (pulsed)
- Robust brass housing, nickel-plated with fine thread M8 x 1 mm
- Enclosure rating IP 67

Dimensional drawing

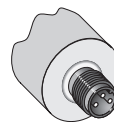
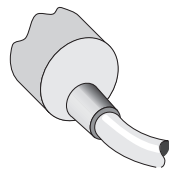


- 1 Connection
- 2 Display LED
- 3 Fastening nuts (2 x); width across 13, metal



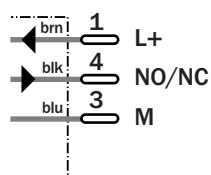
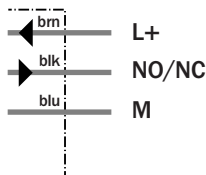
Connection type

IM08-04NNS-ZW1	IM08-04NNO-ZT1
IM08-04NPO-ZW1	IM08-04NNS-ZT1
IM08-04NPS-ZW1	IM08-04NPO-ZT1
	IM08-04NPS-ZT1



3 x 0.14 mm²

M8, 3-pin



See chapter Accessories
Connector, M8, 3-pin

Technical data		IM08-	04NNS-ZW1	04NPO-ZW1	04NPS-ZW1	04NNO-ZT1	04NNS-ZT1	04NPO-ZT1	04NPS-ZT1			
Sensing range S_n	4 mm											
Electrical configuration	DC 3-wire											
Supply voltage V_s	DC 10 ... 30 V											
Residual ripple V_{pp}	$\leq 10\%$ ¹⁾											
Voltage drop V_d	$\leq 1.2\text{ V}$ ²⁾											
Power consumption	$\leq 20\text{ mA}$ ³⁾											
Continuous current I_a	$\leq 200\text{ mA}$											
Time delay before availability t_v	$\leq 100\text{ ms}$											
Hysteresis H, of s_r	2 ... 15 %											
Repeatability R	$\leq 5\%$ (U_b and T_a constant) ⁴⁾											
Temperature drift, of s_r	$\pm 10\%$											
EMC	According to EN 60947-5-2											
Switching output	PNP											
	NPN											
Output function	Normally open											
	Normally closed											
Installation	Non-flush											
Connection type	Connector, M8, 3-pin											
	Cable, PVC, 2 m											
Enclosure rating	IP 67 ⁵⁾											
Max. switching frequency	1,800 Hz											
Dimensions	M8 x 1 ⁶⁾											
Short circuit protection	✓ ⁷⁾											
Reverse polarity protection	✓											
Power-up pulse suppression	✓											
Shock/vibration stress	30 g, 11 ms/10 ... 55 Hz, 1 mm											
Ambient operating temperature T_a	-25 °C ... +70 °C											
Housing material	Brass nickel-plated, plastic											
Tightening torque	4 Nm											

¹⁾ of U_b
²⁾ at I_a max
³⁾ without load
⁴⁾ of s_r
⁵⁾ according to EN 60529
⁶⁾ thread diameter x pitch (mm)
⁷⁾ (pulsed)

Order information

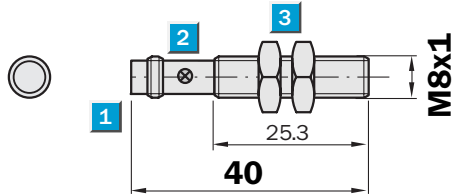
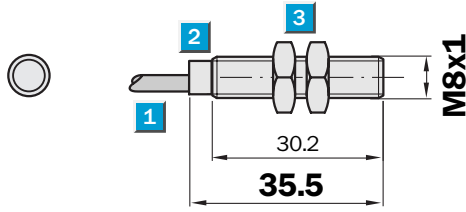
Type	Order no.
IM08-04NNS-ZW1	7 900 010
IM08-04NPO-ZW1	7 900 011
IM08-04NPS-ZW1	7 900 009
IM08-04NNO-ZT1	7 900 016
IM08-04NNS-ZT1	7 900 014
IM08-04NPO-ZT1	7 900 015
IM08-04NPS-ZT1	7 900 013

Sensing range
2 mm

Inductive sensor

- Enhanced sensing range
- High switching frequency
- Short-circuit protection (pulsed)
- Robust brass housing, nickel-plated with fine thread M8 x 1 mm
- Enclosure rating IP 67

Dimensional drawing



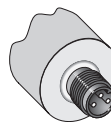
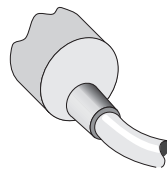
- 1 Connection
- 2 Display LED
- 3 Fastening nuts (2 x); width across 13, metal



Connection type

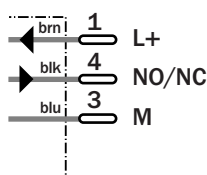
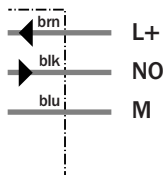
IM08-02BNS-ZWK
IM08-02BPS-ZWK

IM08-02BNS-ZTK
IM08-02BPO-ZTK
IM08-02BPS-ZTK
IM08-02BNO-ZTK



3 x 0.14 mm²

M8, 3-pin



See chapter Accessories

Connector, M8, 3-pin

Technical data		IM08-	02BNS-ZWK	02BPS-ZWK	02BNS-ZTK	02BPO-ZTK	02BPS-ZTK	02BNO-ZTK				
Sensing range S_n	2 mm											
Electrical configuration	DC 3-wire											
Supply voltage V_s	DC 10 ... 30 V											
Residual ripple V_{pp}	$\leq 10\%$ ¹⁾											
Voltage drop V_d	$\leq 1.2\text{ V}$ ²⁾											
Power consumption	$\leq 10\text{ mA}$ ³⁾											
Continuous current I_a	$\leq 200\text{ mA}$											
Time delay before availability t_v	$\leq 5\text{ ms}$											
Hysteresis H, of s_r	1 ... 20 %											
Repeatability R	$\leq 5\%$ (U_b and T_a constant) ⁴⁾											
Temperature drift, of s_r	$\pm 10\%$											
EMC	According to EN 60947-5-2											
Switching output	NPN											
	PNP											
Output function	Normally closed											
	Normally open											
Installation	Flush											
Connection type	Connector, M8, 3-pin											
	Cable, PVC, 2 m											
Enclosure rating	IP 67 ⁵⁾											
Max. switching frequency	3,000 Hz											
Dimensions	M8 x 1 ⁶⁾											
Short circuit protection	✓ ⁷⁾											
Reverse polarity protection	✓											
Power-up pulse suppression	✓											
Shock/vibration stress	30 g, 11 ms/10 ... 55 Hz, 1 mm											
Ambient operating temperature T_a	-25 °C ... +70 °C											
Housing material	Brass nickel-plated, plastic											
Tightening torque	4 Nm											

¹⁾ of U_b
²⁾ at I_a max

³⁾ without load
⁴⁾ of s_r

⁵⁾ according to EN 60529
⁶⁾ thread diameter x pitch (mm)

⁷⁾ (pulsed)

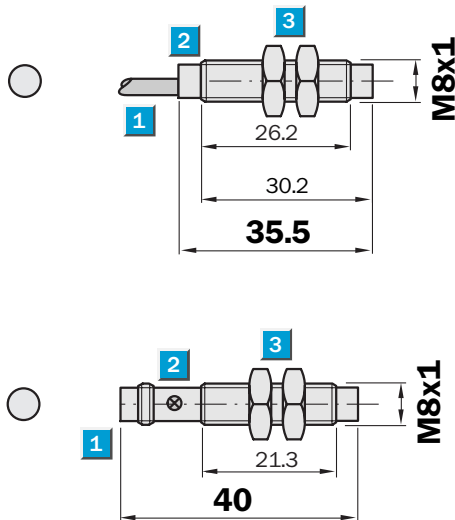
Order information	
Type	Order no.
IM08-02BNS-ZWK	6 025 862
IM08-02BPS-ZWK	6 025 861
IM08-02BNS-ZTK	6 025 864
IM08-02BPO-ZTK	6 025 865
IM08-02BPS-ZTK	6 025 863
IM08-02BNO-ZTK	6 025 866

Sensing range
4 mm

Inductive sensor

- Enhanced sensing range
- High switching frequency
- Short-circuit protection (pulsed)
- Robust brass housing, nickel-plated with fine thread M8 x 1 mm
- Enclosure rating IP 67

Dimensional drawing



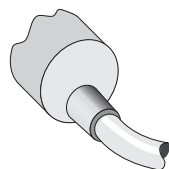
- 1 Connection
- 2 Display LED
- 3 Fastening nuts (2 x); width across 13, metal



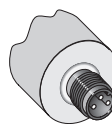
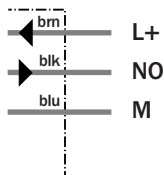
Connection type

IM08-04NPS-ZWK
IM08-04NNS-ZWK

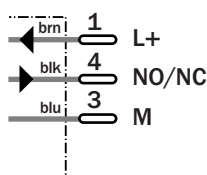
IM08-04NPS-ZTK
IM08-04NNO-ZTK
IM08-04NNS-ZTK
IM08-04NPO-ZTK



3 x 0.14 mm²



M8, 3-pin



See chapter Accessories
Connector, M8, 3-pin

Technical data		IM08-	04NPS-ZWK	04NNS-ZWK	04NPS-ZTK	04NNO-ZTK	04NNS-ZTK	04NPO-ZTK				
Sensing range S_n	4 mm											
Electrical configuration	DC 3-wire											
Supply voltage V_s	DC 10 ... 30 V											
Residual ripple V_{pp}	$\leq 10\%$ ¹⁾											
Voltage drop V_d	$\leq 1.2\text{ V}$ ²⁾											
Power consumption	$\leq 10\text{ mA}$ ³⁾											
Continuous current I_a	$\leq 200\text{ mA}$											
Time delay before availability t_v	$\leq 5\text{ ms}$											
Hysteresis H, of s_r	1 ... 20 %											
Repeatability R	$\leq 5\%$ (U_b and T_a constant) ⁴⁾											
Temperature drift, of s_r	$\pm 10\%$											
EMC	According to EN 60947-5-2											
Switching output	PNP											
	NPN											
Output function	Normally closed											
	Normally open											
Installation	Non-flush											
Connection type	Connector, M8, 3-pin											
	Cable, PVC, 2 m											
Enclosure rating	IP 67 ⁵⁾											
Max. switching frequency	2,500 Hz											
Dimensions	M8 x 1 ⁶⁾											
Short circuit protection	✓ ⁷⁾											
Reverse polarity protection	✓											
Power-up pulse suppression	✓											
Shock/vibration stress	30 g, 11 ms/10 ... 55 Hz, 1 mm											
Ambient operating temperature T_a	-25 °C ... +70 °C											
Housing material	Brass nickel-plated, plastic											
Tightening torque	4 Nm											

¹⁾ of U_b
²⁾ at I_a max

³⁾ without load
⁴⁾ of s_r

⁵⁾ according to EN 60529
⁶⁾ thread diameter x pitch (mm)

⁷⁾ (pulsed)

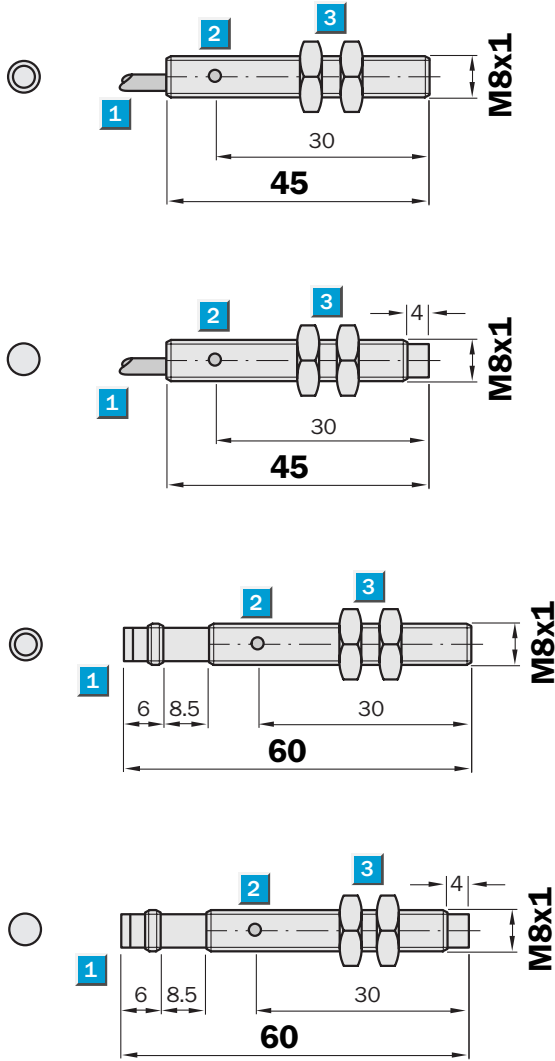
Order information	
Type	Order no.
IM08-04NPS-ZWK	6 025 867
IM08-04NNS-ZWK	6 025 868
IM08-04NPS-ZTK	6 025 869
IM08-04NNO-ZTK	6 025 872
IM08-04NNS-ZTK	6 025 870
IM08-04NPO-ZTK	6 025 871

Sensing range
3 / 6 mm

Inductive sensor

- Triple sensing range
- Installation quasi flush or non-flush in metal
- Short-circuit protection (pulsed)
- Robust brass housing, chrome-plated with fine thread M8 x 1 mm
- Enclosure rating IP 67

Dimensional drawing

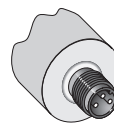
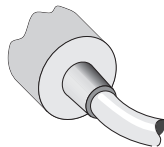


- 1 Connection
- 2 Display LED
- 3 Fastening nuts (2 x); width across 13, metal



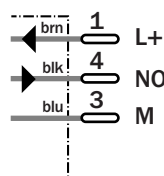
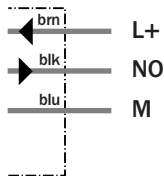
Connection type

IM08-03BPS-ZW1	IM08-03BPS-ZT1
IM08-06NNS-ZW1	IM08-06NPS-ZT1
IM08-06NPS-ZW1	



3 x 0.14 mm²

M8, 3-pin



See chapter Accessories
Connector, M8, 3-pin

Technical data		IM08-	03BPS-ZW1	03BPS-ZT1	06NNS-ZW1	06NPS-ZW1	06NPS-ZT1					
Sensing range S_n	6 mm											
	3 mm											
Electrical configuration	DC 3-wire											
Supply voltage V_s	DC 10 ... 30 V											
Residual ripple V_{pp}	$\leq 20\%$ ¹⁾											
Voltage drop V_d	$\leq 2\text{ V}$ ²⁾											
Power consumption	$\leq 10\text{ mA}$ ³⁾											
Continuous current I_a	$\leq 200\text{ mA}$											
Time delay before availability t_v	$\leq 100\text{ ms}$											
Hysteresis H, of s_r	1 ... 15 %											
Repeatability R	$\leq 5\%$ (U_b and T_a constant) ⁴⁾											
Temperature drift, of s_r	$\pm 10\%$											
EMC	According to EN 60947-5-2											
Switching output	PNP											
	NPN											
Output function	Normally open ⁵⁾											
Installation	Non-flush											
	Quasi-flush ⁶⁾											
Connection type	Connector, M8, 3-pin											
	Cable, PVC, 2 m											
Enclosure rating	IP 67 ⁷⁾											
Max. switching frequency	500 Hz											
	1,000 Hz											
Dimensions	M8 x 1 ⁸⁾											
Short circuit protection	\checkmark ⁹⁾											
Reverse polarity protection	\checkmark											
Power-up pulse suppression	\checkmark											
Shock/vibration stress	30 g, 11 ms/10 ... 55 Hz, 1 mm											
Ambient operating temperature T_a	-25 °C ... +70 °C											
Housing material	Brass, chrome-plated, plastic											
Tightening torque	4 Nm											

¹⁾ of U_b
²⁾ at I_a max
³⁾ without load

⁴⁾ of s_r
⁵⁾ other output functions available on request.

⁶⁾ when mounting in conductible materials the sensors must be installed with a distance A to the surface. A Steel, metal =

1 mm/A Stainless steel = 0 mm
⁷⁾ according to EN 60529
⁸⁾ thread diameter x pitch (mm)
⁹⁾ (pulsed)

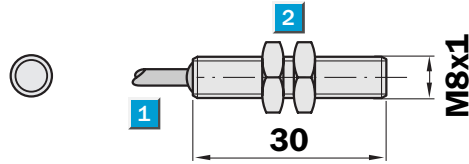
Order information	
Type	Order no.
IM08-03BPS-ZW1	6 027 505
IM08-03BPS-ZT1	6 025 574
IM08-06NNS-ZW1	6 027 507
IM08-06NPS-ZW1	6 027 506
IM08-06NPS-ZT1	6 027 508

Sensing range
1 mm

Inductive sensor

- NAMUR to EN 60 947-5-6
 - High switching frequency
 - Robust brass housing, nickel-plated, with fine thread M8 x 1 mm
 - Enclosure rating IP 67
 - Classification PTB 03 ATEX 2037
- ⊕ II 2G EEx ia IIC T6

Dimensional drawing

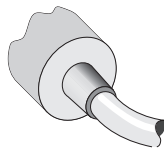


- 1 Connection
- 2 Display LED
- 3 Fastening nuts (2 x); width across 13, metal

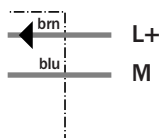


Connection type

IM08-01B-N-ZW0



2 x 0.14 mm²



See chapter Accessories

Switching units

Technical data		IM08-01B-	N-ZW0											
Sensing range S_n	1 mm													
Electrical configuration	NAMUR													
Supply voltage V_s	DC 5 ... 25 V													
Nominal voltage V_n	DC 8.2 V													
Power consumption, attenuated	≤ 1 mA													
Power consumption, unattenuated	≥ 2.2 mA													
Internal capacitance	≤ 80 nF													
Internal inductance	≤ 110 μH													
Cable resistance	≤ 50 Ohm													
Temperature drift, of s_r	± 10 %													
EMC	Accroding to EN 60 947-5-6													
Switching output	Control current dependent on switching ¹⁾													
Output function	NAMUR													
Installation	Flush													
Connection type	Cable, PVC, 2 m													
Enclosure rating	IP 67 ²⁾													
Max. switching frequency	2,000 Hz													
Dimensions	M8 x 1 ³⁾													
Shock/vibration stress	30 g, 11 ms/10 ... 55 Hz, 1 mm													
Ambient operating temperature T_a	-25 °C ... +70 °C													
Housing material	Brass nickel-plated, plastic													
Tightening torque	2.5 Nm													

¹⁾ according to EN 60947-5-6 ²⁾ according to EN 60529 ³⁾ thread diameter x pitch (mm)

Max. data for connecting Isolating unit EN 2 EX
or other approved isolating amplifier:

Short circuit current I_{kmax}	50 mA
No load voltage U_0	16 V
Power loss P_{max}	75 mW

Order information	
Type	Order no.
IM08-01B-N-ZW0	6 021 123