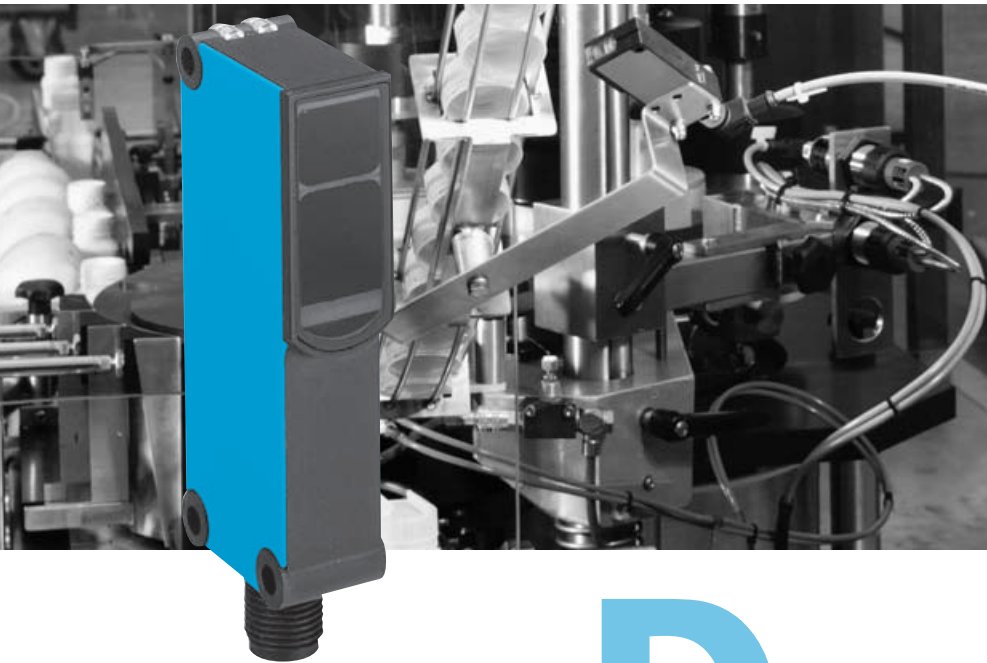


W 14-2: Economic Solution for Standard Applications



	Photoelectric proximity switch BGB
	Photoelectric proximity switch energetic
	Photoelectric reflex switch
	Through-beam photoelectric switches

Detect and count conveyed objects in standard applications reliably and economically – and do it at economical prices especially for standard applications – these are the two pivotal demands of market puts on a sensor. The new W 14-2 photoelectric switch series fulfills these requirements of the market for standard sensors both from a technological and economical standpoint.

A choice of sensing techniques are available to handle your jobs with the photoelectric proximity switch with adjustable background blanking or energetic with

Teach-in function as well as the WL 14-2 photoelectric reflex switch and the WS/WE 14-2 through-beam photoelectric switch.

The ranges:

- WS/WE 14-2 through-beam photoelectric switch: 15 m
- WL 14-2 photoelectric reflex switch: 6 m (PL 80 A), with polarizing filter
- WT 14-2 photoelectric proximity switch with adjustable background blanking: 80 ... 500 mm (infrared), 50 ... 250 mm (red light)
- WT 14-2 Photoelectric proximity switch energetic with Teach-in function: 300 ... 1500 mm.

Long-life infrared and red light transmitter diodes and 4-pin M12 plugs or cables are standard in all equipment, which also have reverse-polarity protected connections, short-circuit protected switching outputs and interference pulse suppression.

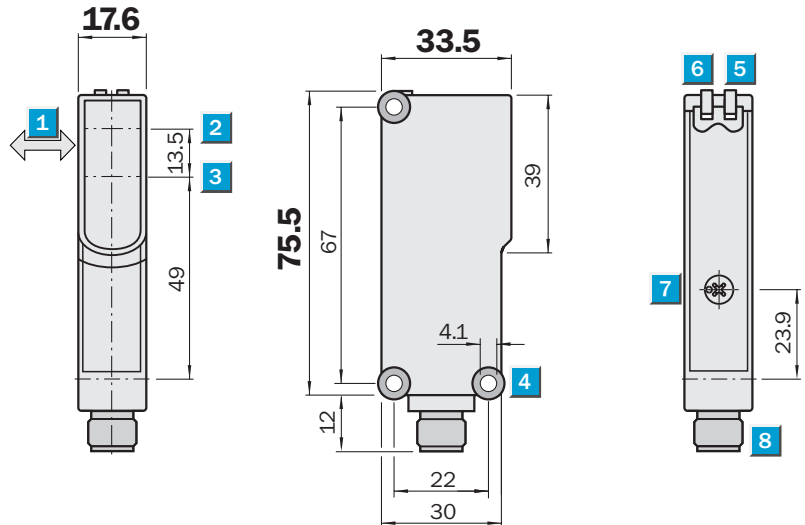
These sensors are used traditionally in conveyor engineering and the packaging industry. But the W 14-2 series is also well suited for use in other applications within automation technology thanks to its sturdy design and reliability.



Scanning distance
 80 ... 500 mm
Photoelectric proximity switch

- Infrared light
- Background blanking, adjustable
- Sturdy plastic housing

Dimensional drawing

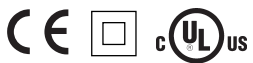
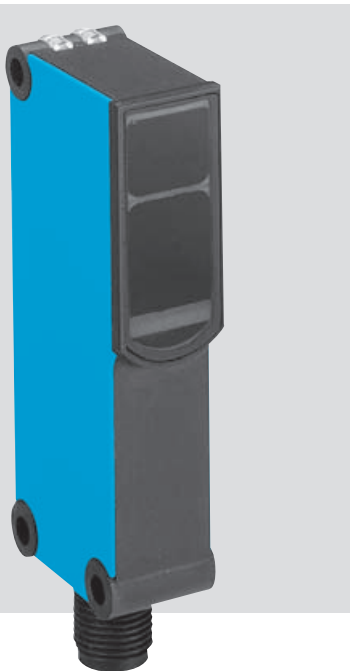


Adjustments possible

All types

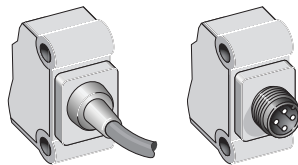


- 1 Standard direction of the material being scanned
- 2 Optical axis sender
- 3 Optical axis receiver
- 4 Mounting hole \varnothing 4.1 mm
- 5 LED indicator, yellow; status of received light beam
- 6 LED indicator, green; power on
- 7 Scanning distance adjustment, Poti 4 turn
- 8 Plug M12, 4-pin or 2 m cable

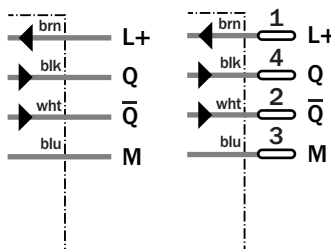


Connection type

WT14-2P122	WT14-2P422
WT14-2N122	WT14-2N422



4 x 0.25 mm² 4-pin, M12



Accessories

Cables and connectors
Mounting systems

Technical data		WT14-2	P122	P422	N122	N422						
Scanning distance , adjustable ¹⁾	80 ... 500 mm, 90 % remission											
Visible range ⁴⁾	20 ... 500 mm											
Adjustment	Via potentiometer, 4 turn											
Light source ²⁾ , light type	LED, infrared light											
Light spot diameter	14 mm at 300 mm											
Supply voltage V_S	10 ... 30 V DC ³⁾											
Residual ripple ⁴⁾	< 5 V_{PP}											
Current consumption ⁵⁾	< 30 mA											
Output current I_A max.	< 100 mA											
Switching outputs	PNP, antivalent											
	NPN, antivalent											
Response time ⁶⁾	< 2.5 ms											
Max. switching frequency ⁷⁾	200/s											
Connection type	Cable ⁸⁾ PVC, 2 m, 4-wire											
	M12 plug, 4-pin											
VDE protection class ⁹⁾	<input type="checkbox"/>											
Circuit protection ¹⁰⁾	A, B, C											
Enclosure rating	IP 65											
Ambient temperature	Operation -25 °C ... +60 °C											
	Storage -40 °C ... +70 °C											
Weight	with cable	Approx. 120 g										
	with plug	Approx. 40 g										
Housing material	ABS											

¹⁾ Object with 90 % remission (based on standard white DIN 5033)
²⁾ Average service life 100,000 h at $T_A = +25\text{ °C}$

³⁾ Limit values; operation in short-circuit protected network max. 8 A
⁴⁾ May not exceed or fall short of V_S tolerances

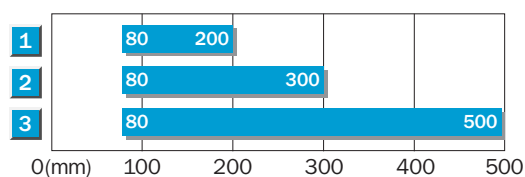
⁵⁾ Without load
⁶⁾ Signal transit time with resistive load
⁷⁾ With light/dark ratio 1:1
⁸⁾ Do not bend below 0 °C

⁹⁾ Reference voltage 50 V DC
¹⁰⁾ A = V_S connections reverse-polarity protected
 B = Outputs Q and \bar{Q} short-circuit protected
 C = Interference pulse suppression

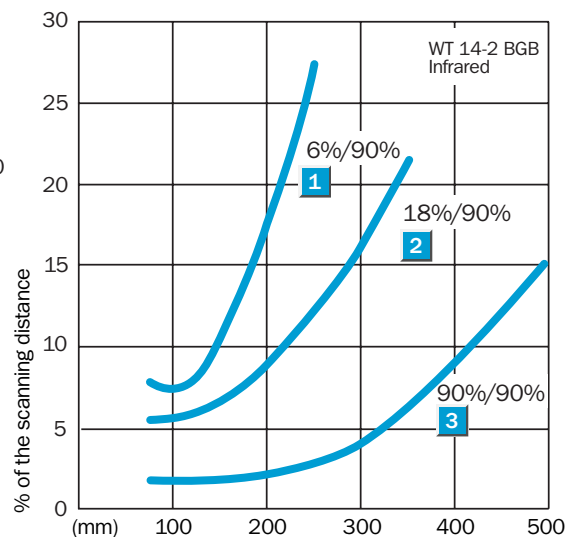
Adjustment via potentiometer

1. Position the object in the path of the beam.
2. By rotating the potentiometer to the right until the yellow LED illuminates continuously = object is positively detected.
3. If necessary, fine adjustments to the scanning distance can be made to suit the conditions of the application:
 minimal rotation of the potentiometer to the right = scanning distance will be increased,
 minimal rotation of the potentiometer to the left = scanning distance will be decreased.

Scanning distance



- | | |
|---|--|
| 1 | Scanning distance on black, 6 % remission |
| 2 | Scanning distance on grey, 18 % remission |
| 3 | Scanning distance on white, 90 % remission |



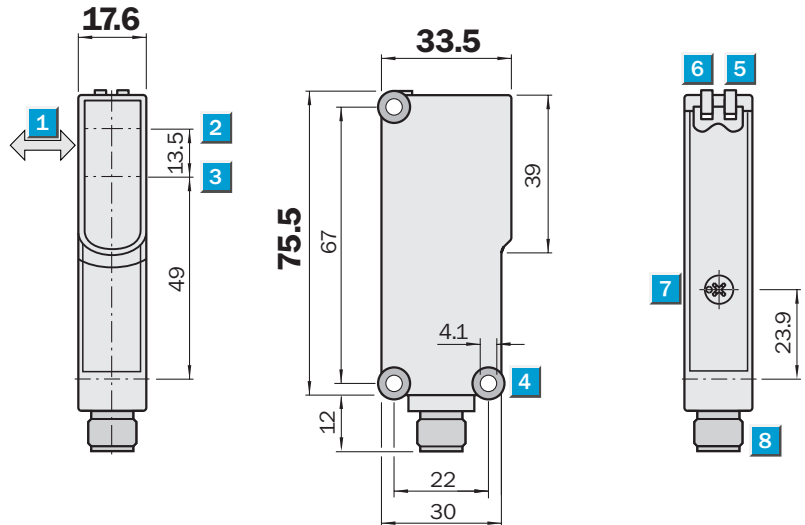
Order information

Type	Order no.
WT14-2P122	1 026 051
WT14-2P422	1 026 052
WT14-2N122	1 026 053
WT14-2N422	1 026 054

Scanning distance
 50 ... 250 mm
 Photoelectric proximity switch

- Red light
- Background blanking, adjustable
- Sturdy plastic housing

Dimensional drawing



Adjustments possible

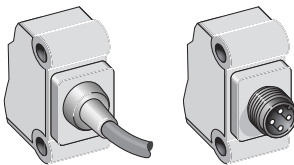
All types



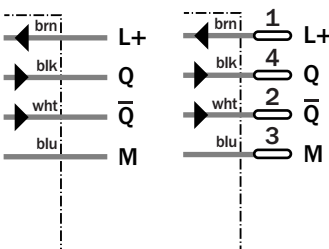
- 1 Standard direction of the material being scanned
- 2 Optical axis sender
- 3 Optical axis receiver
- 4 Mounting hole \varnothing 4.1 mm
- 5 LED indicator, yellow; status of received light beam
- 6 LED indicator, green; power on
- 7 Scanning distance adjustment, Poti 4 turn
- 8 Plug M12, 4-pin or 2 m cable

Connection type

WT14-2P132	WT14-2P432
WT14-2N132	WT14-2N432



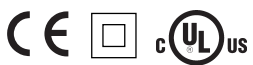
4 x 0.25 mm² 4-pin, M12



Accessories

Cables and connectors

Mounting systems



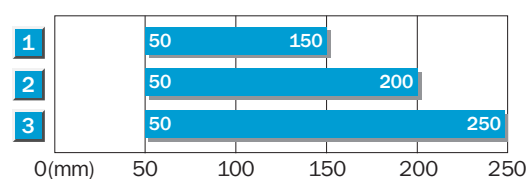
Technical data		WT14-2	P132	P432	N132	N432						
Scanning distance , adjustable ¹⁾	50 ... 250 mm, 90 % remission											
Visible range ⁴⁾	20 ... 250 mm											
Adjustment	Via potentiometer, 4 turn											
Light source ²⁾, light type	LED, red light											
Light spot diameter	10 mm at 250 mm											
Supply voltage V_S	10 ... 30 V DC ³⁾											
Residual ripple ⁴⁾	< 5 V_{PP}											
Current consumption ⁵⁾	< 25 mA											
Output current I_A max.	< 100 mA											
Switching outputs	PNP, antivalent											
	NPN, antivalent											
Response time ⁶⁾	< 2.5 ms											
Max. switching frequency ⁷⁾	200/s											
Connection type	Cable ⁸⁾ PVC, 2 m, 4-wire											
	M12 plug, 4-pin											
VDE protection class ⁹⁾	<input type="checkbox"/>											
Circuit protection ¹⁰⁾	A, B, C											
Enclosure rating	IP 65											
Ambient temperature	Operation -25 °C ... +60 °C											
	Storage -40 °C ... +70 °C											
Weight	with cable	Approx. 120 g										
	with plug	Approx. 40 g										
Housing material	ABS											

- ¹⁾ Object with 90 % remission (based on standard white DIN 5033)
- ²⁾ Average service life 100,000 h at $T_A = +25\text{ °C}$
- ³⁾ Limit values; operation in short-circuit protected network max. 8 A
- ⁴⁾ May not exceed or fall short of V_S tolerances
- ⁵⁾ Without load
- ⁶⁾ Signal transit time with resistive load
- ⁷⁾ With light/dark ratio 1:1
- ⁸⁾ Do not bend below 0 °C
- ⁹⁾ Reference voltage 50 V DC
- ¹⁰⁾ A = V_S connections reverse-polarity protected
B = Outputs Q and \bar{Q} short-circuit protected
C = Interference pulse suppression

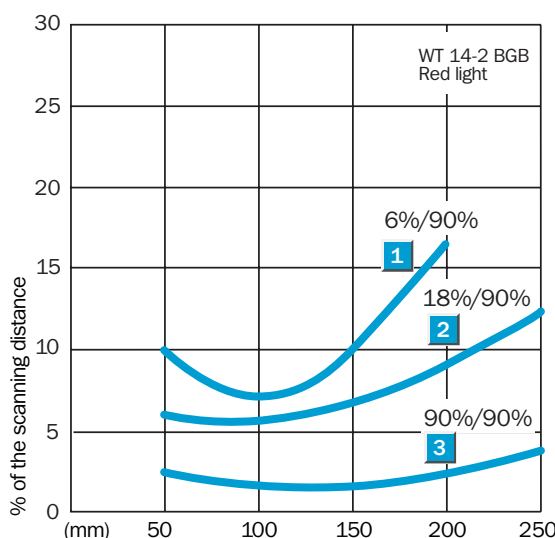
Adjustment via potentiometer

1. Position the object in the path of the beam.
2. By rotating the potentiometer to the right until the yellow LED illuminates continuously = object is positively detected.
3. If necessary, fine adjustments to the scanning distance can be made to suit the conditions of the application:
minimal rotation of the potentiometer to the right = scanning distance will be increased,
minimal rotation of the potentiometer to the left = scanning distance will be decreased.

Scanning distance

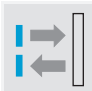


- 1 Scanning distance on black, 6 % remission
- 2 Scanning distance on grey, 18 % remission
- 3 Scanning distance on white, 90 % remission



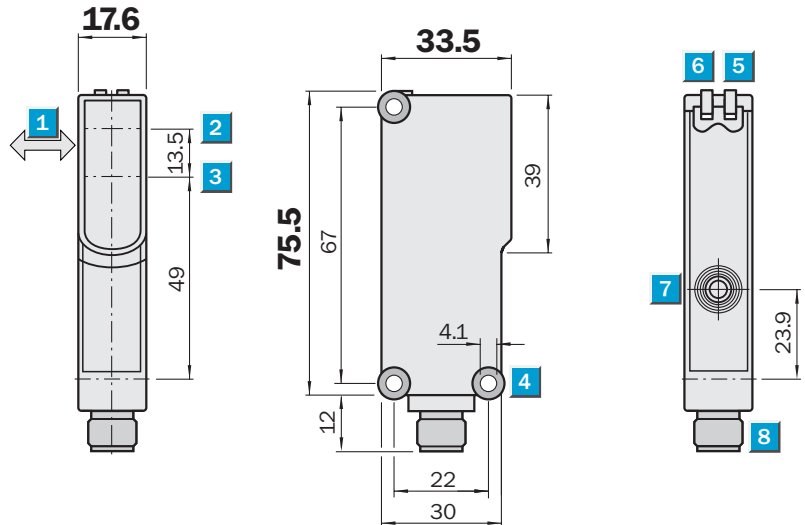
Order information

Type	Order no.
WT14-2P132	1 026 055
WT14-2P432	1 026 056
WT14-2N132	1 026 072
WT14-2N432	1 026 057


Scanning distance
 300 ... 1500 mm
 Photoelectric proximity switch

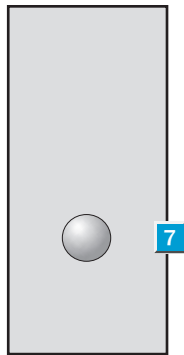
- Infrared light
- Energetic proximity switch
- Teach-in function
- Sturdy plastic housing

Dimensional drawing



Adjustments possible

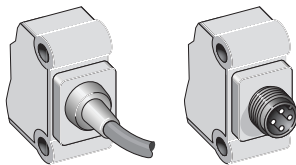
All types



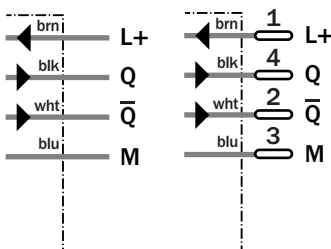
- 1 Standard direction of the material being scanned
- 2 Optical axis sender
- 3 Optical axis receiver
- 4 Mounting hole \varnothing 4.1 mm
- 5 LED indicator, yellow; status of received light beam
- 6 LED indicator, green; power on
- 7 Teach-in button
- 8 Plug M12, 4-pin or 2 m cable

Connection type

WT14-2P111	WT14-2P411
WT14-2N111	WT14-2N411



4 x 0.25 mm ²	4-pin, M12
--------------------------	------------



Accessories

Cables and connectors

Mounting systems



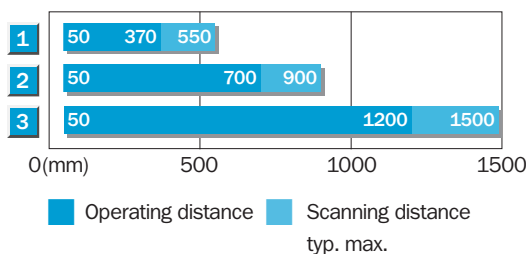
Technical data		WT14-2	P111	P411	N111	N411						
Scanning distance , adjustable ¹⁾	300 ... 1500 mm, 90 % remission											
Adjustment	Teach-in button											
Light source ²⁾ , light type	LED, infrared light											
Light spot diameter	56 mm at 1000 mm											
Supply voltage V_S	10 ... 30 V DC ³⁾											
Residual ripple ⁴⁾	< 5 V_{pp}											
Current consumption ⁵⁾	≤ 55 mA											
Output current I_A max.	< 100 mA											
Switching outputs	PNP, antivalent											
	NPN, antivalent											
Response time ⁶⁾	≤ 2.5 ms											
Max. switching frequency ⁷⁾	200/s											
Connection type	Cable ⁸⁾ PVC, 2 m, 4-wire											
	M12 plug, 4-pin											
VDE protection class ⁹⁾	<input type="checkbox"/>											
Circuit protection ¹⁰⁾	A, B, C											
Enclosure rating	IP 65											
Ambient temperature	Operation -25 °C ... +60 °C											
	Storage -40 °C ... +70 °C											
Weight	with cable	Approx. 120 g										
	with plug	Approx. 40 g										
Housing material	ABS											

- ¹⁾ Object with 90 % remission (based on standard white DIN 5033)
- ²⁾ Average service life 100,000 h at $T_A = +25 °C$
- ³⁾ Limit values; operation in short-circuit protected network max. 8 A
- ⁴⁾ May not exceed or fall short of V_S tolerances
- ⁵⁾ Without load
- ⁶⁾ Signal transit time with resistive load
- ⁷⁾ With light/dark ratio 1:1
- ⁸⁾ Do not bend below 0 °C
- ⁹⁾ Reference voltage 50 V DC
- ¹⁰⁾ A = V_S connections reverse-polarity protected
B = Outputs Q and \bar{Q} short-circuit protected
C = Interference pulse suppression

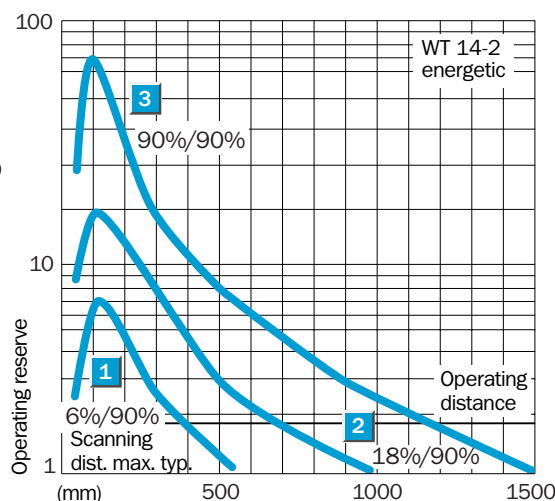
Teach-in function

- **Programming via Teach-in button.**
- **Simple programming:**
position object in light beam,
press button, finished;
LED confirms the successful Teach-in procedure.
- **Teach-in value is stored.**
- **Two operating modes:**
Default setting: short Teach-in time (< 6 s),
For standard applications;
Approx. double reserve via switching threshold;
LED lights.
Precise setting: long Teach-in time (> 8 s);
For precise applications;
Slight reserve via switching threshold;
LED blinks when operating reserve > 2 (see graphic).

Scanning distance




- 1 Scanning distance on black, 6 % remission
- 2 Scanning distance on grey, 18 % remission
- 3 Scanning distance on white, 90 % remission



Order information

Type	Order no.
WT14-2P111	1 026 058
WT14-2P411	1 026 059
WT14-2N111	1 026 060
WT14-2N411	1 026 062

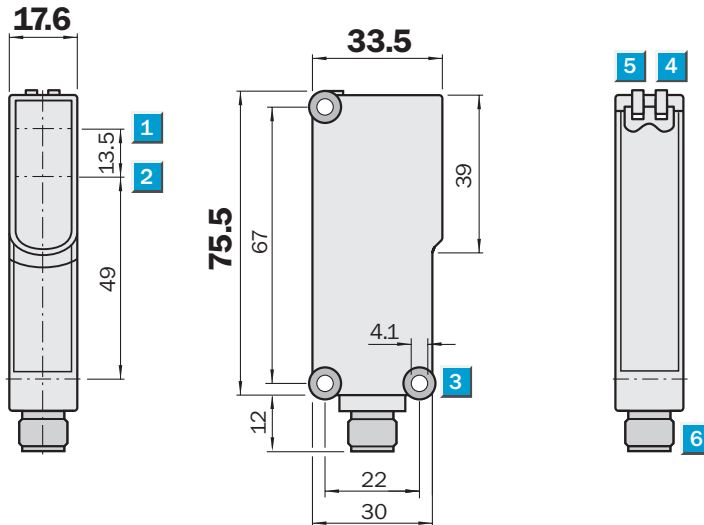
WL 14 Photoelectric reflex switch, red light


Scanning range
6 m

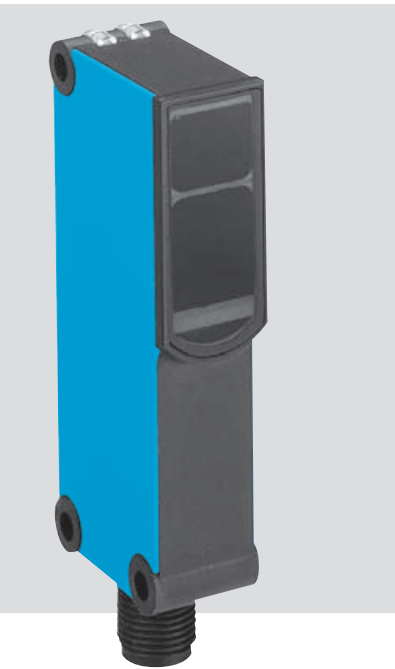
Photoelectric reflex switch

- Red light
- Polarisation filter which permits the reliable detection of objects with shiny surfaces
- Sturdy plastic housing

Dimensional drawing

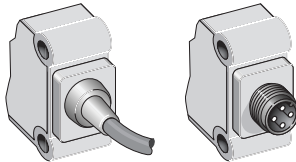


- 1 Optical axis sender
- 2 Optical axis receiver
- 3 Mounting holes \varnothing 4.1 mm
- 4 LED indicator, yellow; status of received light beam
- 5 LED indicator, green; power on
- 6 Plug M12, 4-pin or 2 m cable

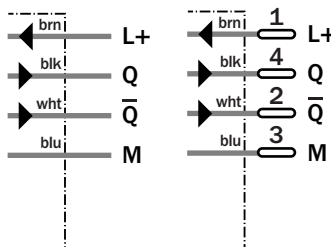


Connection type

WL14-2P130	WL14-2P430
WL14-2N130	WL14-2N430



4 x 0.25 mm² 4-pin, M12



Accessories
Cables and connectors
Mounting systems
Reflectors



Technical data		WL14-2	P130	P430	N130	N430						
Scanning range , typ. max./on reflector	6 m/PL 80 A											
Light source ¹⁾ , light type	LED, red light											
Opening angle	2°											
Light spot diameter	140 mm at 4 m											
Polarising filter	Yes											
Supply voltage V_S	10 ... 30 V DC ²⁾											
Residual ripple ³⁾	≤ 5 V_{PP}											
Current consumption ⁴⁾	≤ 35 mA											
Output current I_A max.	< 100 mA											
Switching outputs	PNP, antivalent											
	NPN, antivalent											
Response time ⁵⁾	≤ 2.5 ms											
Max. switching frequency ⁶⁾	200/s											
Connection type	Cable ⁷⁾ PVC, 2 m, 4-wire											
	M12 plug, 4-pin											
VDE protection class ⁸⁾	<input type="checkbox"/>											
Circuit protection ⁹⁾	A, B, C											
Enclosure rating	IP 65											
Ambient temperature	Operation -25 °C ... +60 °C											
	Storage -40 °C ... +70 °C											
Weight	with cable	Approx. 120 g										
	with plug	Approx. 40 g										
Housing material	ABS											

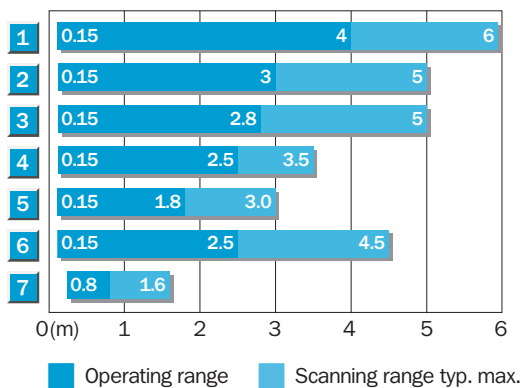
1) Average service life 100,000 h at $T_A = +25 °C$
 2) Limit values; operation in short-circuit protected network max. 8 A

3) May not exceed or fall short of V_S tolerances
 4) Without load
 5) Signal transit time with resistive load

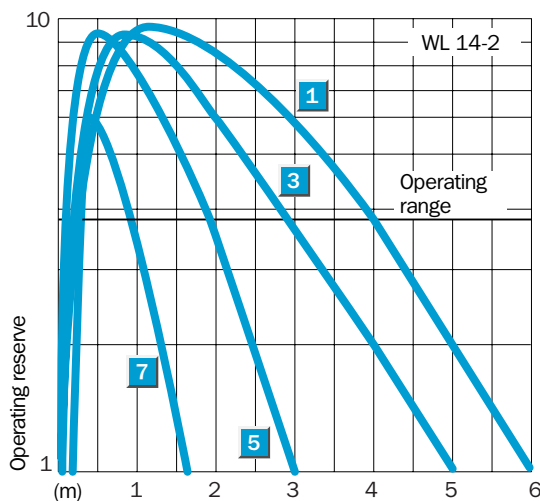
6) With light/dark ratio 1:1
 7) Do not bend below 0 °C
 8) Reference voltage 50 V DC

9) A = V_S connections reverse-polarity protected
 B = Outputs Q and \bar{Q} short-circuit protected
 C = Interference pulse suppression

Scanning range




Reflector type	Operating range
1 PL 80 A	0.15 ... 4 m
2 PL 50 A	0.15 ... 3 m
3 PL 40 A	0.15 ... 2.8 m
4 PL 30 A	0.15 ... 2.5 m
5 PL 20 A	0.15 ... 1.8 m
6 C 110	0.15 ... 2.5 m
7 Reflective tape Diamond Grade	0.3 ... 0.8 m



Order information

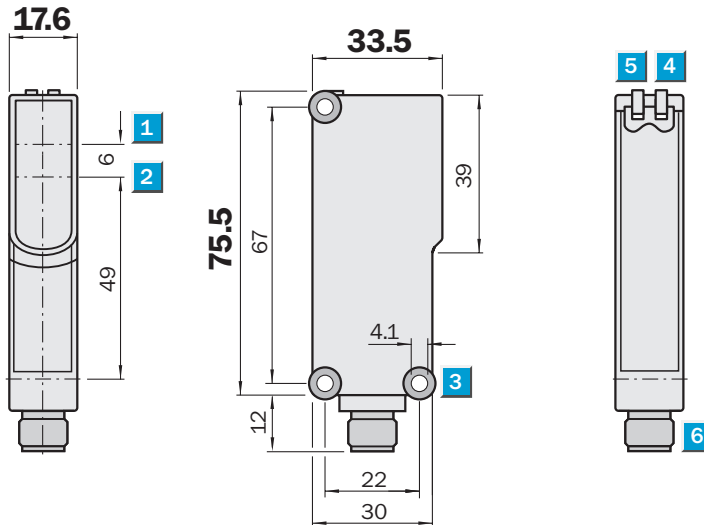
Type	Order no.
WL14-2P130	1 026 050
WL14-2P430	1 026 049
WL14-2N130	1 026 047
WL14-2N430	1 026 048

 **Scanning range**
15 m

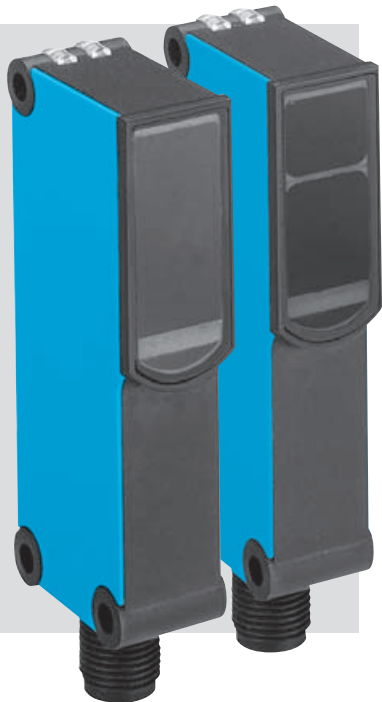
Through-beam photoelectric switches

- Red light
- Test input for system diagnostics
- Sturdy plastic housing

Dimensional drawing

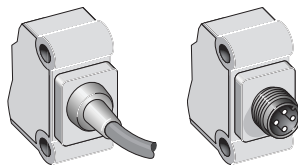


- 1** Optical axis sender (only WS)
- 2** Optical axis receiver (only WE)
- 3** Mounting holes Ø 4.1 mm
- 4** LED indicator, yellow; status of received light beam
- 5** LED indicator, green; power on
- 6** Plug M12, 4-pin or 2 m cable

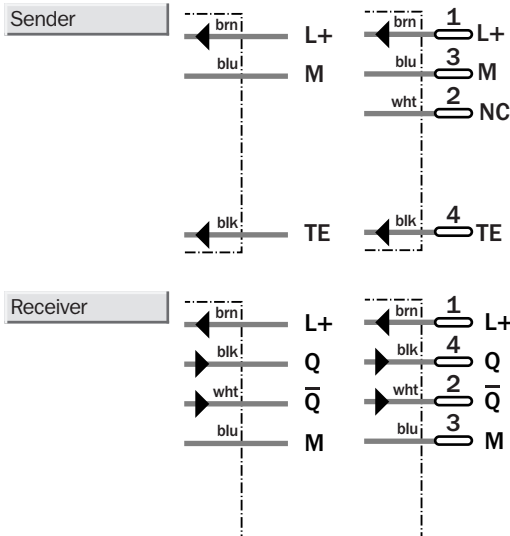


Connection type

WS/WE14-2P130	WS/WE14-2P430
WS/WE14-2N130	WS/WE14-2N430



3/4 x 0.25 mm² 4-pin, M12

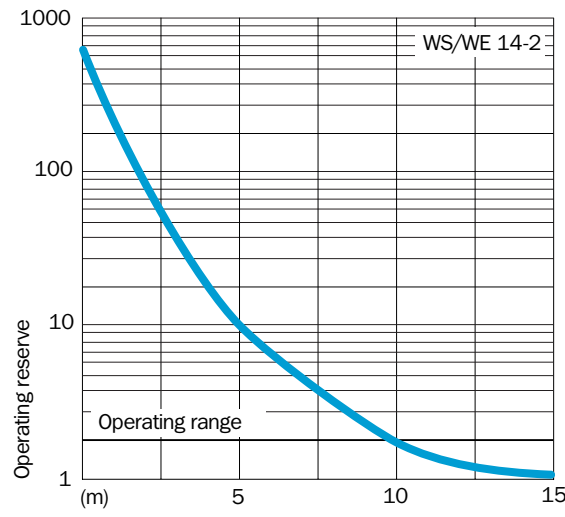
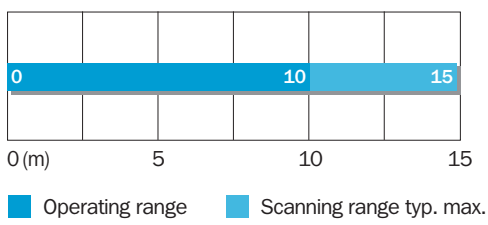


Accessories
Cables and connectors
Mounting systems

Technical data		WS/WE14-2	P130	P430	N130	N430						
Scanning range , typ. max.	0 ... 15 m											
Light source ¹⁾ , light type	LED, red light											
Light spot diameter	300 mm at 10 m											
Supply voltage V_S	10 ... 30 V DC ²⁾											
Residual ripple ³⁾	$\leq 5 V_{PP}$											
Current consumption ⁴⁾	≤ 60 mA											
Sender	≤ 35 mA											
Receiver	≤ 25 mA											
Output current I_A max.	< 100 mA											
Switching outputs	PNP, antivalent											
	NPN, antivalent											
Response time ⁵⁾	≤ 2.5 ms											
Max. switching frequency ⁶⁾	200/s											
Test input »TE« sender off	TE to 0 V											
Connection type	Cable ⁷⁾ PVC, 2 m, 3-/4-wire											
	M12 plug, 4-pin											
VDE protection class ⁸⁾	<input type="checkbox"/>											
Circuit protection ⁹⁾	A, B, C											
Enclosure rating	IP 65											
Ambient temperature	Operation $-25^\circ\text{C} \dots +60^\circ\text{C}$											
	Storage $-40^\circ\text{C} \dots +70^\circ\text{C}$											
Weight	with cable	Approx. 120 g										
	with plug	Approx. 40 g										
Housing material	ABS											

1) Average service life 100,000 h at $T_A = +25^\circ\text{C}$
 2) Limit values; operation in short-circuit protected network max. 8 A
 3) May not exceed or fall short of V_S tolerances
 4) Without load
 5) Signal transit time with resistive load
 6) With light/dark ratio 1:1
 7) Do not bend below 0°C
 8) Reference voltage 50 V DC
 9) A = V_S connections reverse-polarity protected
 B = Outputs Q and \bar{Q} short-circuit protected
 C = Interference pulse suppression

Scanning range and operating reserve



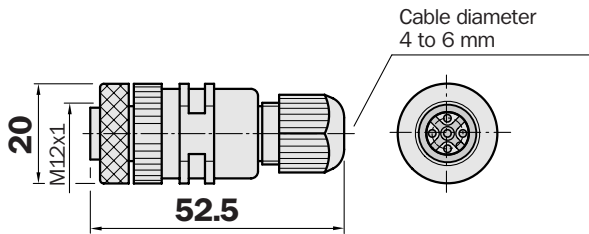
Order information	
Type	Order no.
WS/WE14-2P130	1 026 430
WS/WE14-2P430	1 026 431
WS/WE14-2N130	1 026 432
WS/WE14-2N430	1 026 433

Dimensional drawings and order information

SENSICK screw-in system M12, 4-pin, enclosure rating IP 67

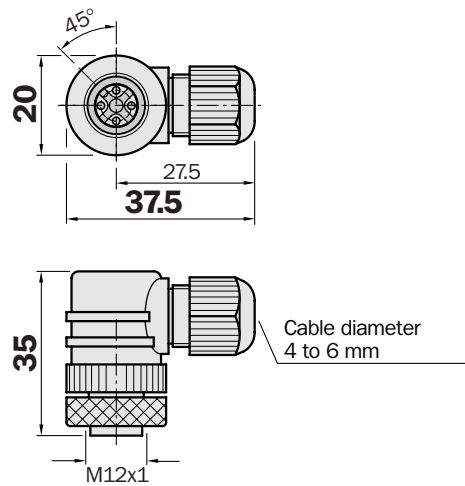
Female connector M12, 4-pin, straight

Type	Order no.	Contacts
DOS-1204-G	6 007 302	4



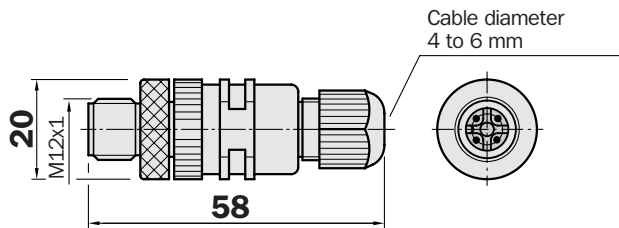
Female connector M12, 4-pin, right angle

Type	Order no.	Contacts
DOS-1204-W	6 007 303	4



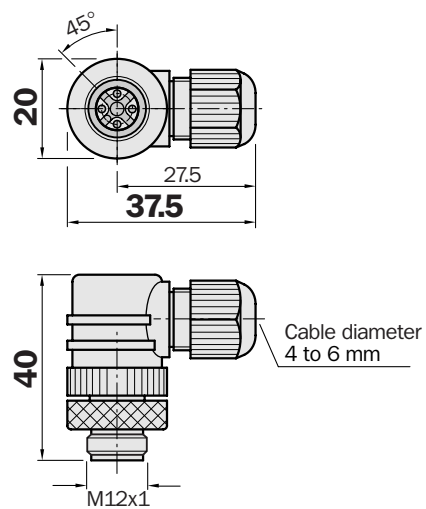
Male connector M12, 4-pin, straight

Type	Order no.	Contacts
STE-1204-G	6 009 932	4



Male connector M12, 4-pin, right angle

Type	Order no.	Contacts
STE-1204-W	6 022 084	4



Dimensional drawings and order information

SENSICK screw-in system M12, 4-pin, enclosure rating IP 67

Female connector M12, 4-pin, straight

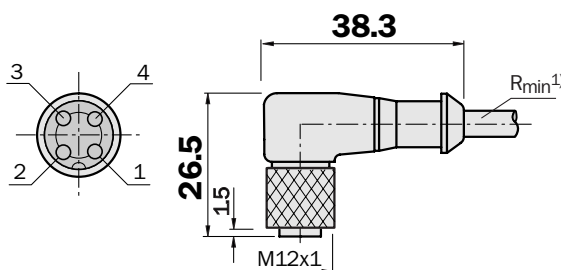
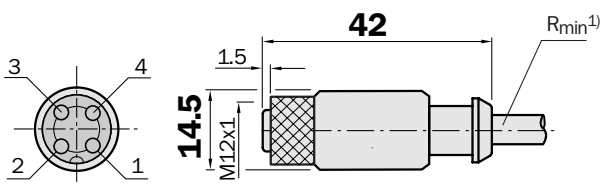
Cable diameter 5 mm, 4 x 0.25 mm², sheath PVC

Type	Order no.	Contacts	Cable length
DOL-1204-G02M	6 009 382	4	2 m
DOL-1204-G05M	6 009 866	4	5 m
DOL-1204-G10M	6 010 543	4	10 m
DOL-1204-G15M	6 010 753	4	15 m

Female connector M12, 4-pin, right angle

Cable diameter 5 mm, 4 x 0.25 mm², sheath PVC

Type	Order no.	Contacts	Cable length
DOL-1204-W02M	6 009 383	4	2 m
DOL-1204-W05M	6 009 867	4	5 m
DOL-1204-W10M	6 010 541	4	10 m



¹⁾ Minimum bend radius in dynamic use
 $R_{min} = 20 \times \text{cable diameter}$

Female connector M12, 4-pin, straight

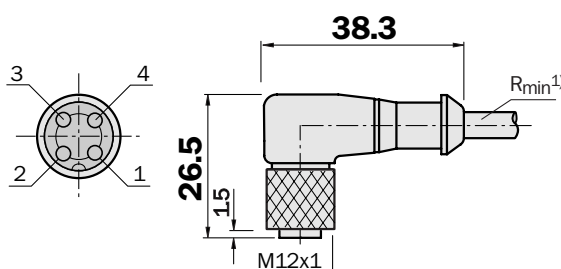
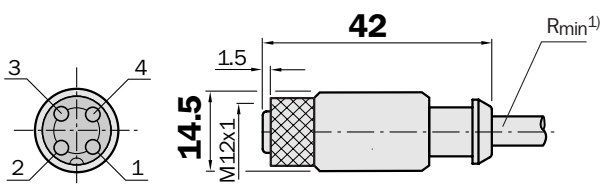
Cable diameter 5 mm, 4 x 0.25 mm², sheath PUR

Type	Order no.	Contacts	Cable length
DOL-1204-G02MC	6 025 900	4	2 m
DOL-1204-G05MC	6 025 901	4	5 m
DOL-1204-G10MC	6 025 902	4	10 m

Female connector M12, 4-pin, right angle

Cable diameter 5 mm, 4 x 0.25 mm², sheath PUR

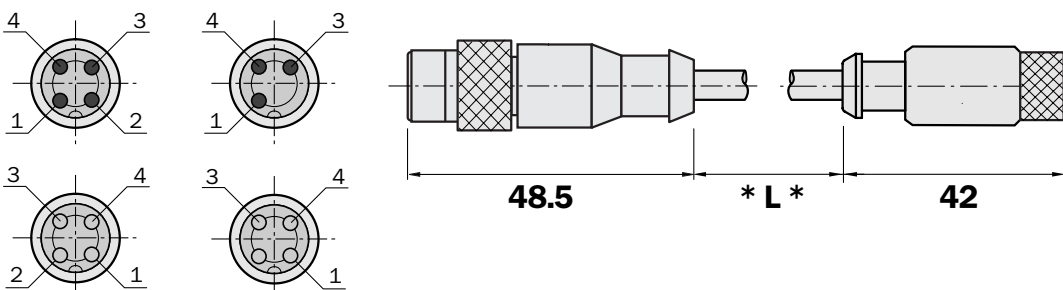
Type	Order no.	Contacts	Cable length
DOL-1204-W02MC	6 025 903	4	2 m
DOL-1204-W05MC	6 025 904	4	5 m
DOL-1204-W10MC	6 025 905	4	10 m



¹⁾ Minimum bend radius in dynamic use
 $R_{min} = 20 \times \text{cable diameter}$

Extension cable, female connector M12 (straight), male connector M12 (straight)

Type	Order no.	Contacts Female connector	Contacts Male connector	Material	Cable length [m]
DSL-1203-G0M6	6 022 564	4 (3 connected)	3	PVC	0.6
DSL-1203-G02M	6 022 566	4 (3 connected)	3	PVC	2
DSL-1203-G05M	6 022 568	4 (3 connected)	3	PVC	5
DSL-1204-G0M6	6 022 565	4	4	PVC	0.6
DSL-1204-G02M	6 022 567	4	4	PVC	2
DSL-1204-G05M	6 022 569	4	4	PVC	5
DSL-1203-G0M6C	6 025 922	4 (3 connected)	3	PUR	0.6
DSL-1203-G02MC	6 025 923	4 (3 connected)	3	PUR	2
DSL-1204-G0M6C	6 025 926	4	4	PUR	0.6
DSL-1204-G02MC	6 025 927	4	4	PUR	2

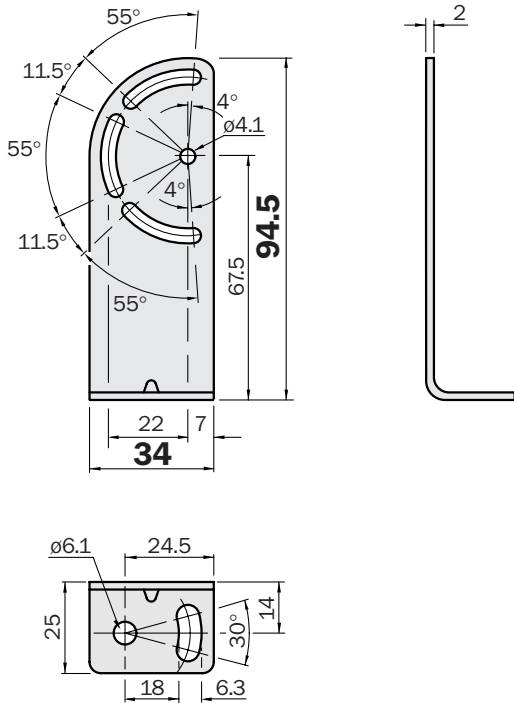


Dimensional drawings and order information

Mounting systems

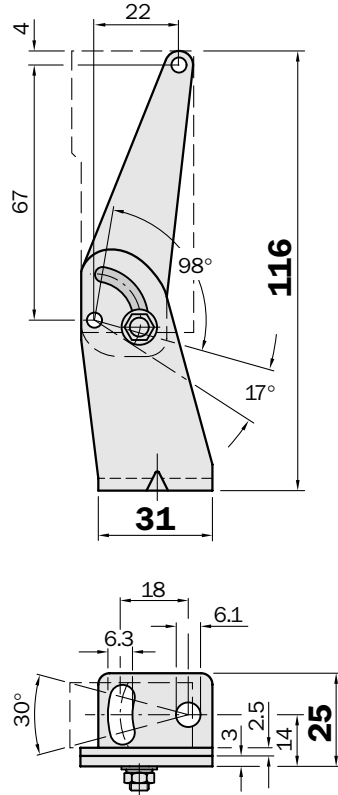
Mounting bracket

Type	Order no.
BEF-WN-W14	2 019 084

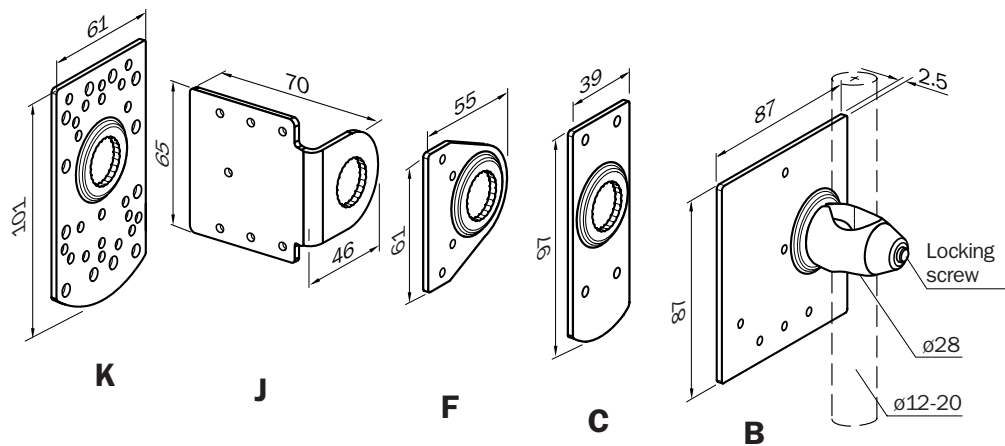


Mounting bracket

Type	Order no.
BEF-WN-W18	2 009 317



Universal bracket (rod mounting) for sensors and reflectors



Mounting plates	Type	Order no. ¹⁾	for device/reflector type
B	BEF-KHS-B01	2 022 459	PL 250, P 250 F, PL 30 A, PL 40 A, PL 50 A, PL 80 A, C 110
C	BEF-KHS-C01	2 022 460	W 14-2, W 18-3
F	BEF-KHS-F01	2 022 463	PL 20 A, PL 20 F, P 250, P 250 F, W 260
J	BEF-KHS-J01	2 022 719	PL 20 A, PL 20 F, PL 40 A, PL 50 A, P 250, P 250 F, C 110
K	BEF-KHS-K01	2 022 718	W 11, W 12-2, W 12L-2, W 14-2, W 18-3, W 23, W 24-2, W 27-2, W 30, W 32, W 34, KT 2, KT 5, KT 10, CS 1/3, LUT 3, DS 60, PL 20 A, PL 20 F, PL 30 A, PL 40 A, PL 50 A, PL 80 A, P 250, P 250 F, C 110
	BEF-KHS-KH1	2 022 726	Clamp without mounting plate

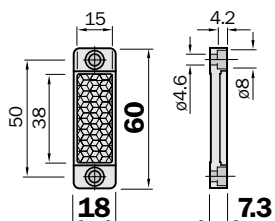
¹⁾ Order no. includes bar support and mounting material

Dimensional drawings and order information

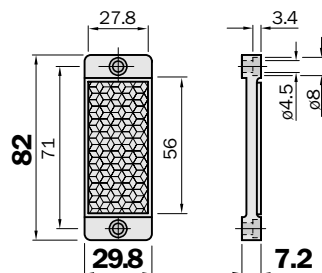
Reflectors

Plastic design for temperatures up to 65 °C

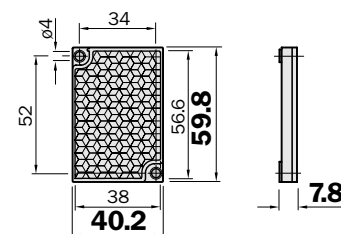
Reflector 20 x 40 mm ²	
Type	Order no.
PL 20 A	1 012 719



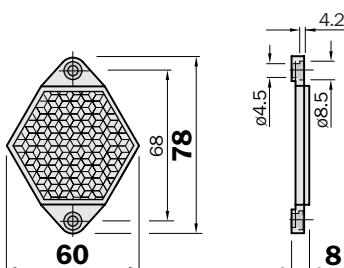
Reflector 30 x 50 mm ²	
Type	Order no.
PL 30 A	1 002 314



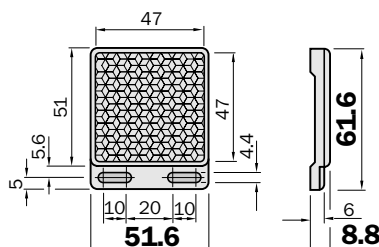
Reflector 40 x 60 mm ²	
Type	Order no.
PL 40 A	1 012 720



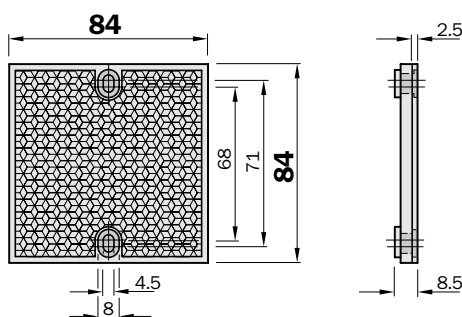
Reflector, 6-sided width across flats 48 mm	
Type	Order no.
PL 50 A	1 000 132



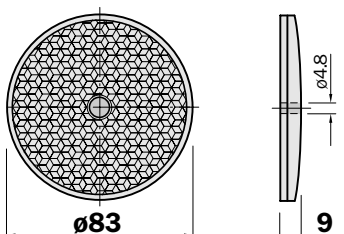
Reflector 47 x 47 mm ²	
Type	Order no.
P 250	5 304 812



Reflector 80 x 80 mm ²	
Type	Order no.
PL 80 A	1 003 865



Reflector, diameter 83 mm, center hole mounting	
Type	Order no.
C 110	5 304 549



Reflective tape "Diamond Grade", self-adhesive		
Type	Order no.	
REF-DG-K	4 019 634	Cut to size
REF-DG	5 304 334	Sheet 749 x 914 mm ²



Contact:

Australia

Phone +61 3 9497 4100
1800 33 48 02 – tollfree
E-Mail sales@sick.com.au

Belgium / Luxembourg

Phone +32 (0)2 466 55 66
E-Mail info@sick.be

Brazil

Phone +55 11 5091-4900
E-Mail sac@sick.com.br

Ceská Republika

Phone +420 2 57 91 18 50
E-Mail sick@sick.cz

China

Phone +852-2763 6966
E-Mail ghk@sick.com.hk

Danmark

Phone +45 45 82 64 00
E-Mail sick@sick.dk

Deutschland

Phone +49 (0)2 11 53 01-250
E-Mail vzdinfo@sick.de

España

Phone +34 93 480 31 00
E-Mail info@sick.es

France

Phone +33 1 64 62 35 00
E-Mail info@sick.fr

Great Britain

Phone +44 (0)1727 831121
E-Mail info@sick.co.uk

Italia

Phone +39 02 27 40 93 19
E-Mail ced@sick.it

Japan

Phone +81 (0)3 3358 1341
E-Mail info@sick.jp

Korea

Phone +82-2 786 6321/4
E-Mail kang@sickkorea.net

Netherlands

Phone +31 (0)30 229 25 44
E-Mail info@sick.nl

Norge

Phone +47 67 81 50 00
E-Mail austefjord@sick.no

Österreich

Phone +43 (0)22 36 62 28 8-0
E-Mail office@sick.at

Polska

Phone +48 22 837 40 50
E-Mail info@sick.pl

Schweiz

Phone +41 41 619 29 39
E-Mail contact@sick.ch

Singapore

Phone +65 6744 3732
E-Mail admin@sicksgp.com.sg

Suomi

Phone +358-9-25 15 800
E-Mail sick@sick.fi

Sverige

Phone +46 8 680 64 50
E-Mail info@sick.se

Taiwan

Phone +886 2 2365-6292
E-Mail sickgrc@ms6.hinet.net

Türkiye

Phone +90 216 388 95 90 pbx
E-Mail info@sick.com.tr

USA / Canada / México

Phone +1(952) 941-6780
1 800-325-7425 – tollfree
E-Mail info@sickusa.com

More representatives and agencies
in all major industrial nations at
www.sick.com

