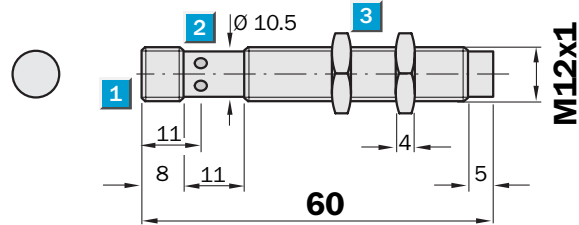
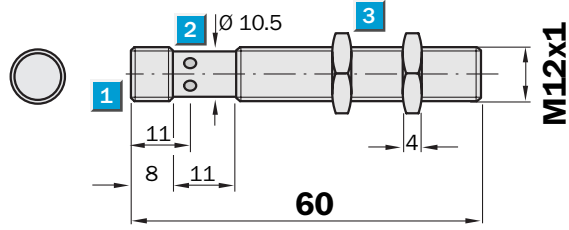


**Sensing range**  
6 / 10 mm

Inductive sensor

- Triple sensing range
- Installation flush or non-flush in metal
- Robust stainless steel V4A, 316L one piece housing, with fine thread M12 x 1 mm
- Enclosure rating IP 69K
- Especially suitable for use in the food and beverage sector

Dimensional drawing



- 1 Connection
- 2 Display LED
- 3 Fastening nuts (2 x); width across 17, stainless steel V4A, 316L



Connection type

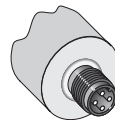
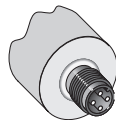
IM12-06BPO-NC1

IM12-06BNS-NC1

IM12-06BPS-NC1

IM12-10NNS-NC1

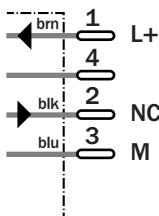
IM12-10NPS-NC1



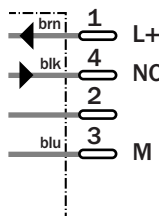
See chapter Accessories

Connector, M12, 4-pin

M12, 4-pin



M12, 4-pin



Technical data		IM12-	06BNS-NC1	06BPO-NC1	06BPS-NC1	10NNS-NC1	10NPS-NC1						
<b>Sensing range S<sub>n</sub></b>	10 mm												
	6 mm												
<b>Electrical configuration</b>	DC 3-wire												
<b>Supply voltage V<sub>s</sub></b>	DC 10 ... 30 V												
Ripple V <sub>pp</sub>	≤ 20 % <sup>1)</sup>												
Voltage drop V <sub>d</sub>	≤ 2 V <sup>2)</sup>												
Current consumption	≤ 15 mA <sup>3)</sup>												
<b>Continuous current I<sub>a</sub></b>	≤ 200 mA												
Time delay before availability t <sub>v</sub>	≤ 80 ms												
Hysteresis H (of s <sub>r</sub> )	1 ... 15 %												
Repeatability R	≤ 5 % (U <sub>b</sub> and T <sub>a</sub> constant) <sup>4)</sup>												
Temperature drift, of s <sub>r</sub>	± 10 %												
EMC	According to EN 60 947-5-2												
<b>Switching output</b>	PNP												
	NPN												
<b>Output function</b>	Normally open <sup>5)</sup>												
	Normally closed <sup>5)</sup>												
<b>Installation</b>	Non-flush <sup>6)</sup>												
	Flush												
<b>Connection types</b>	Plug, M12, 4-pin												
Enclosure rating	IP 69K												
Max. switching frequency	400 Hz												
Dimensions	M12 x 1 <sup>7)</sup>												
<b>Short-circuit protection</b>	✓ <sup>8)</sup>												
<b>Reverse polarity protection</b>	✓												
<b>Power-up pulse suppression</b>	✓												
Shock / vibration stress	30 g, 11 ms / 10 ... 55 Hz, 1 mm												
Ambient temperature T <sub>a</sub>	-25 °C ... +75 °C												
Housing material	Stainless steel V4A, 316L												
Tightening material	10 Nm												

<sup>1)</sup> of U<sub>b</sub>  
<sup>2)</sup> at I<sub>a</sub> max

<sup>3)</sup> without load  
<sup>4)</sup> of s<sub>r</sub>

<sup>5)</sup> other output functions available on request

<sup>6)</sup> see installation notes  
<sup>7)</sup> thread diameter x pitch (mm)  
<sup>8)</sup> (pulsed)

**Correction factors:**

	Flush installation:	Non-flush installation:
Steel (ST37)	1.0	1.0
Copper	0.85	0.8
Aluminium	1.0	1.0
Brass	1.3	1.3
Stainless steel	0.45 / 0.9	0.5 / 0.9

1 mm / 2 mm thick

**Order information**

Type	Order no.
IM12-06BNS-NC1	6 027 573
IM12-06BPO-NC1	6 027 574
IM12-06BPS-NC1	6 027 572
IM12-10NNS-NC1	6 027 576
IM12-10NPS-NC1	6 027 575